

PVCS VERSION MANAGER 6.6

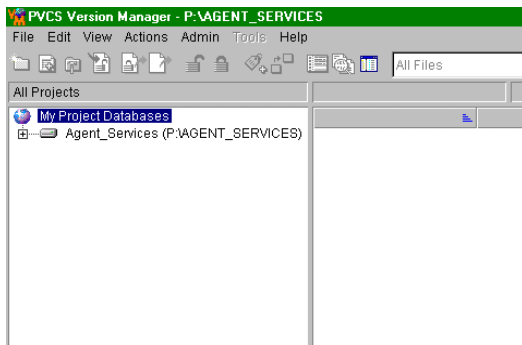
CREATING WORKSPACES

What they do for you Workspaces allow you to isolate different versions of a software application you are developing, thereby allowing and keeping track of parallel developments, maintenance versions, and patches.

#	SYSTEM	YOUR ACTION
---	--------	-------------

1 Start with The Version Manager GUI with your project database opened.

- Select the project database for which you want to create a workspace.

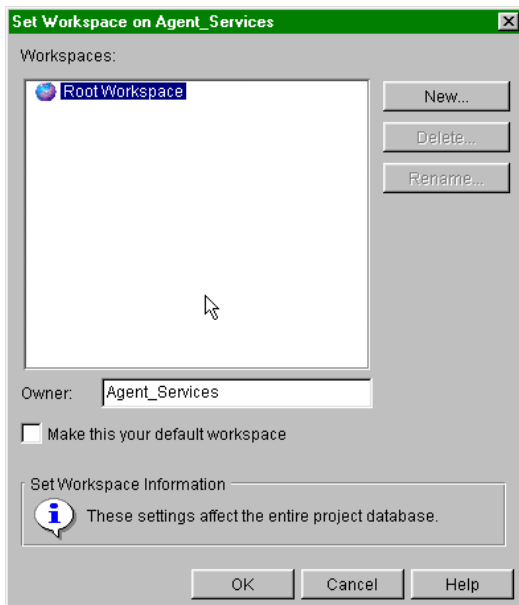


Example: Agent_Services

- Select File, then Set Workspaces.

2 The Set Workspace dialog box opens.

Click the New button.



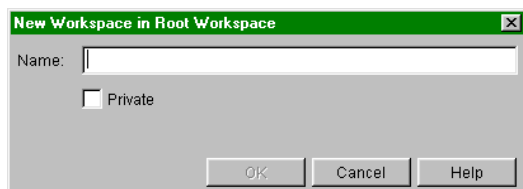
D
E
V
E
L
O
P
E
R
S

K
N
O
W
L
E
D
G
E

N
E
T
W
O
R
K

#	SYSTEM	YOUR ACTION
---	--------	-------------

3 The New Workspace in Root Workspace dialog box opens.

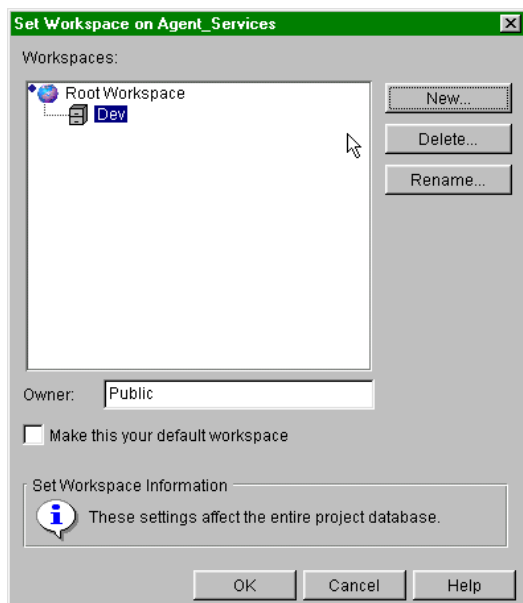


- Enter Dev in the Name field.

Note: Do not check the private box. You are setting up a public workspace.

- Click OK.

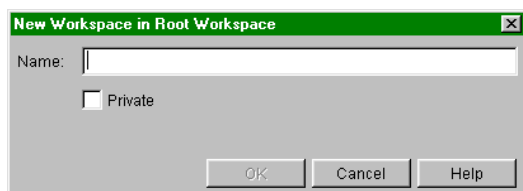
4



- Select Root Workspace.

- Click the New button.

5



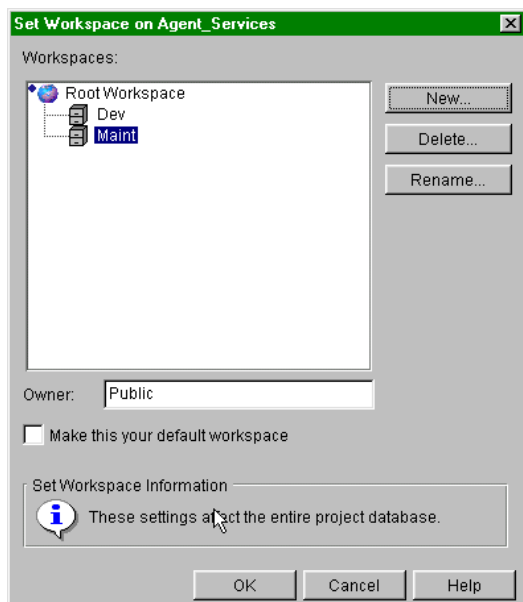
- Type Maint in the Name field.

- Click OK.

DEVELOPERS KNOWLEDGE NETWORK

#	SYSTEM	YOUR ACTION
---	--------	-------------

6 Click OK.

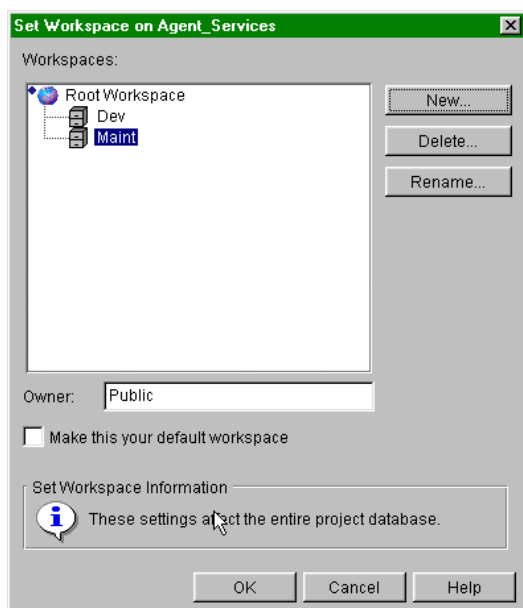


7 **Version Manager GUI**

To change the workspace you are working in, click File > Set Workspace.

8

- Click the box for Make this your default workspace, if you will be working in one workspace for a long time.
- Select the target workspace name.



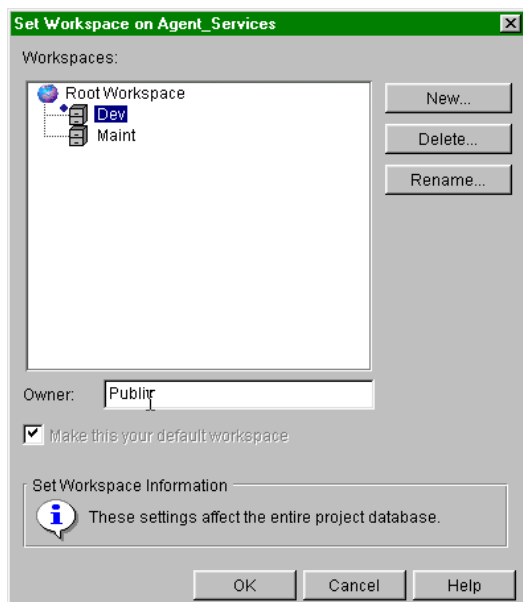
Example: Dev

- Click OK.

DEVELOPERS KNOWLEDGE NETWORK

#	SYSTEM	YOUR ACTION
---	--------	-------------

9 Click OK.



Notice the blue diamond to the upper left of the Dev file cabinet icon denoting that Dev is the default workspace for you.

10 The status bar also shows your current workspace.



Note: As used here “your” workspace is the workspace you are working in. It is a public workspace, not private.

D
E
V
E
L
O
P
E
R
S

K
N
O
W
L
E
D
G
E

N
E
T
W
O
R
K